

PRIMUMULA[®] S.A.

IRONING PRESSING MACHINERIES - FUSING PRESSES

Instruction Manual

Eco DOB (S+B)

Eco DOB E (S+B)



CE

TABLE OF CONTENTS

<u>1. ATTENTION!!!</u>	3
<u>2. Technical Details</u>	4
2.1 Identification Data.....	4
2.2 Use of the instruction Manual.....	4
2.3 Technical Characteristics.....	4
2.4 Technical Description.....	4
<u>3. General rules and Warnings</u>	5
3.1 General rules of using the Ironing Table.....	5
3.2 Warning marks placed on the Ironing Table.....	5
<u>4. Assembly Instructions</u>	6
<u>5. Electrical Connection</u>	7
<u>6. Activation Instructions</u>	7
6.1 Activation Instructions for Eco DOB	7
6.2 Activation Instructions for Eco DOB E.....	7
6.3 Additional Instructions.....	8
<u>7. Maintenance</u>	8
<u>8. Troubleshooting</u>	8
8.1 The vacuum does not function properly.....	8
8.2 The heating of the working surface is not activated.....	8
8.3 The heating of the ironing buck is not activated.....	9
8.4 The machine operates loudly	9
8.5 The blowing of air does not function.....	9
<u>Images of the spare parts</u>	10
<u>List of spare parts</u>	11
<u>Wiring Diagram of Eco DOB E</u>	13
<u>Wiring Diagram of Eco DOB S+B</u>	14
<u>TECHNICAL ASSISTANT</u>	15

1. ATTENTION!!!

Please read this instruction manual very carefully before you start using your ironing table.

The customer by purchasing this product declares that he is fully aware, and accepts everything mentioned in this operating manual.

Primula SA assumes neither responsibility for any errors herein, nor for incidental nor for resulting damage in connection with the performance or use of this operating manual.

You may not copy, reproduce, or translate this operating manual, or parts of it, to another language without prior written consent of Primula SA.

Any information in this manual may be subject to change without any prior notice.

CAUTION! PLEASE READ CAREFULLY THE INSTRUCTION MANUAL BEFORE INSTALLING THE IRONING TABLE!!!

2nd edition – April 2017

© Primula S.A. 2016

Company name: Primula S.A

Address: 14th km Thessaloniki – Kilkis,
57200 Liti, Thessaloniki, Greece

Industry: Manufacturing of Ironing, Pressing and Finishing Equipment

Telephone: +30 23940 71215

Fax: +30 23940 71438

Web: www.primula.gr

E-mail: info@primula.gr

2. Technical Details

2.1 Identification Data

The Ironing Table, that you have purchased, is a machine of high advanced technology with many advantages, unique in its kind. It is manufactured according to International and European safety standards by a company with experience, since 1969, in this sector. Congratulations for your choice!

Regarding its characteristics, the Ironing Table includes a serial number plate (see below) where all its specifications are displayed. Every warning and symbol that is placed on the Ironing Table is in accordance with the specifications of the European standards.

The serial number plate has been placed in a visible place on the Ironing Table and is made from fadeless material.

Amongst others, the Serial Number plate displays the following:

- Company Logo
- Manufacturer Information
- Model
- Serial Number
- Rated Voltage of Use
- Rated Frequency of Use
- Year of manufacturing
- Accumulated Installed Wattage



Picture 1: Serial Number Sign

2.2 Use of the Instruction Manual

The correct assembly and adjustment of the machine is vital to the safety of the user and the machine's life span. For this reason, the installation, alteration, replacement or extension of the ironing table should only be performed by qualified personnel.

Under no circumstances is interventions allowed in the machine, unless it's for the planned maintenance by an unauthorized engineer.

If you remain uncertain regarding the correct assembly of the machine even after reading the instructions, contact the manufacturer or an authorized representative before starting the operation of the machine.

2.3 Technical Description

Ironing table with heating and suction and blowing.

For ironing readymade garments. Suitable for garment industries, workshops and ateliers.

Available in 3 models. Heating and suction (Eco DOB), heating, suction and blowing (Eco DOB S+B) and E Model (Heating-suction Eco DOB E, Heating-suction-blowing Eco DOB E S+B)

E Version: The E Version has a specialized PC Board that controls and regulates the power consumption of the Ironing Table. In using the E Version you receive optimal performance and stability in suction with the lowest possible energy use. The test results have showed gain in energy savings up to 40%.

2.4 Technical Characteristics

Model	Eco DOB	Eco DOB S+B	Eco DOB E	Eco DOB E S+B
Height adjustment	85cm	85cm	85cm	85cm
Heating power	1KW	1KW	1KW	1KW
Suction power	0.50HP	0.50HP	0.50HP	0.50HP
Blowing power	NO	0.27HP	NO	0.27HP
Power Supply	230V	230V	230V	230V

3. General rules and Warnings

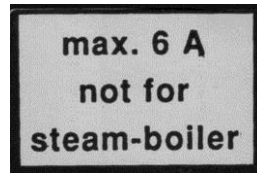
3.1 General rules of using the Ironing Table

For the safe usage of your Ironing Table, please read the following operating instructions carefully, as listed below:

- Install, use and maintain the Ironing Table according to the instructions in this manual. Otherwise, the manufacturer has no responsibility for the possible failed operation or safety.
- Before connecting the power supply, check that the voltage corresponds to the voltage indicated on the technical specifications.
- Connect the machine only to a power supply that meets the minimum required frequency and is properly grounded. Do not leave the Ironing Table while it is operating and is on power without supervision.
- Use the Ironing Table ONLY for the intended purpose in accordance with the current instruction manual and only with the accessories that are provided or that are intended for this specific Ironing Table. The manufacturer is not liable for any damages resulting from misuse or wrong use of the Ironing Table.
- DO NOT touch the power supply with wet hands.
- Do not clean the Ironing Table with corrosive or other damaging materials/chemicals.
- Never use the Ironing Table to support any other machine or structure.
- **It is strictly prohibited to do any kind of welding or alterations on the Ironing Table or its parts.**
- **It is strictly prohibited to remove any protective device/guards.**
- **It is strictly prohibited to intervene in the control units/circuit boards of the Ironing Table.**
- **It is strictly forbidden to do any modification to the technical specifications of the machine (electrical or mechanical) by third persons.**
- Please contact your dealer or the manufacturer for any malfunction or further information requests

3.2 Warning marks placed on the Ironing Table

The following attention marks are placed on each ironing table:



The operator of the system has the obligation to inform himself regarding the dangers which may occur during usage, so that he/she can avoid them or minimize their occurrence as best as he/she is able to.

4. Assembly Instructions

For the instructions mentioned in the current section please see the below **image (picture 2)**.



Picture 2: Assembly

- Turn the ironing board (A) upside down, as showed on picture 2.
- Put the stand (B) on top of board (A) by tightening all the screws.
- Put the foot pedal base (C) tighten all the screws.
- Turn the ironing table to the right position.

5. Electrical Connection

For the electrical connection and above all for the power supply, please follow carefully the instructions of the wiring diagram (enclosed) as well the warning signs symbols attached on the machine. In case you have purchased a single phase machine 230V, connect the machine to the power into the socket 230V/16A. The connection should be done with 3-phase 3X1,5 mm (1 phase, 1 neutral, 1 grounded). The power should be provided with a fuse 10A.

CAUTION! For your own safety, pay attention to all the warning labels (yellow colored) that are placed on the machine. The manufacturer bears no liability for any damages or accidents due to faulty supplying network or to not specified personnel.

6. Activation Instructions

6.1 Activation instructions for Eco DOB

For the instructions mentioned in the current section please see the **below image (picture 3)**.

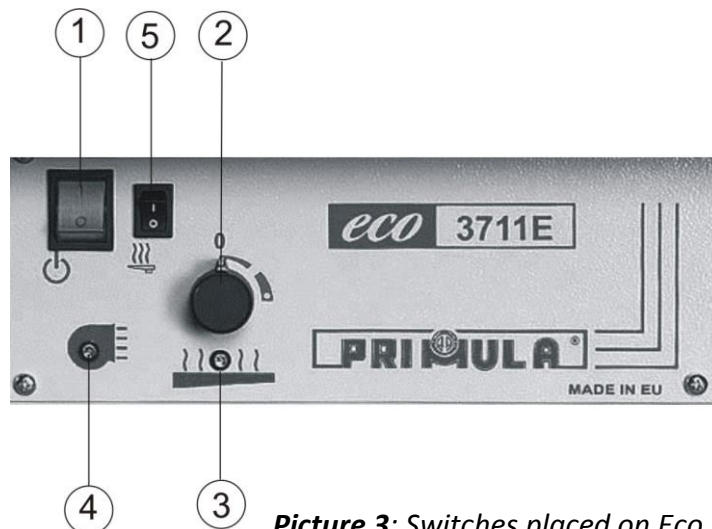


Picture 3: Switches placed on Eco DOB

- Turn on the main switch **No 01**.
- Switch the thermostat **No 03** at the temperature of 110°C during the winter and 90°C during the summer.
- Whenever you want to use the suction just press the suction pedal.
- Adjust the steam quantity of the steam generator in proportion to the suction performance of the table, in order to avoid steam liquidation on the working surface. The refined fabrics require small quantity of steam, while the gross fabrics require big quantity of steam.
- The ironing buck's heating is activated when you press switch **No 2** to position I.

6.2 Activation instructions for Eco DOB E

For the instructions mentioned in the current section please see the **below image (picture 4)**.



Picture 3: Switches placed on Eco DOB E

- Turn on the main switch **No 01**.
- Switch the thermostat **No 02** on MAX position during the winter and on MIN position during the summer. The red led lamp (**No 03**), will indicate when the heating is on. When you want to inactivate the heating switch the thermostat knob (**No 02**) to the zero (0) position.
- Whenever you want to use the suction just press the suction pedal.
- Adjust the steam quantity of the steam generator in proportion to the suction performance of the table, in order to avoid steam liquidation on the working surface. The refined fabrics require small quantity of steam, while the gross fabrics require big quantity of steam.
- The ironing buck's heating is activated when you press switch **No 05** to position I.

6.3 Additional Instructions

In case the table disposes a Vario iron system (optional):

- Hook the steam iron from the balancer and adjust the distance of the steam iron from the working surface (approximately 5cm). After you have finished ironing, unhook the steam iron from the balancer and put it on the iron rest mat.

In case your table disposes a blowing system of air:

- Push with your foot pedal for using the blowing.

7. Maintenance

- Make sure that the covers of the table and the ironing buck remain clean, in order to have high performance of suction and blowing air. Wash periodically the blue polyester fabric and the foam blue in the washing machine (30-40 °C). In case you use felt molleton instead of blue foam, do not wash it in the washing machine, but wash it by hand. Replace them regularly, in order to keep high suction and blowing performance.
- Clean the dust of the fan wheel /impeller at least 2-3 times per year.
- Clean periodically and grease the arm's as well as the buck's bearings.
- Clean periodically the internal parts of the table as well as the electronic circuit by using compressed air.
- Keep the machine clean.

CAUTION!

Before doing maintenance work, please disconnect the machine from the electrical power supply.

8. Troubleshooting

For the instructions mentioned in the current section please see the **drawing of the spare parts of the machine on page 10**.

8.1 The vacuum does not function properly

- Check if there is power supply.
- Check if the power feeding cable **No 05** is for some reason cut off.
- Check the fuse 12A inside the fuse case **No 07**.
- Check if the suction's button pedal **No 21** is faulty.
- Check if the motor **No 01** is for some reason damaged.

8.2 The heating of the ironing buck is not activated.

- Check the buck's cable and plug.

- Check the switch (**No 08**) which indicates the buck's heating on the panel.
- Check the heating element of the ironing buck.

8.3 The heating of the working surface is not activated

- Check if the fuse 12A inside the fuse case **No 07** is burnt out. Replace it.
- Check if the thermostat **No 10** is faulty. Replace it.
- Check if the safety thermostat **No 11** is faulty. Replace it.
- Check if the heating element **No 09** is burnt out. Replace it.

8.4 The machine operates loudly

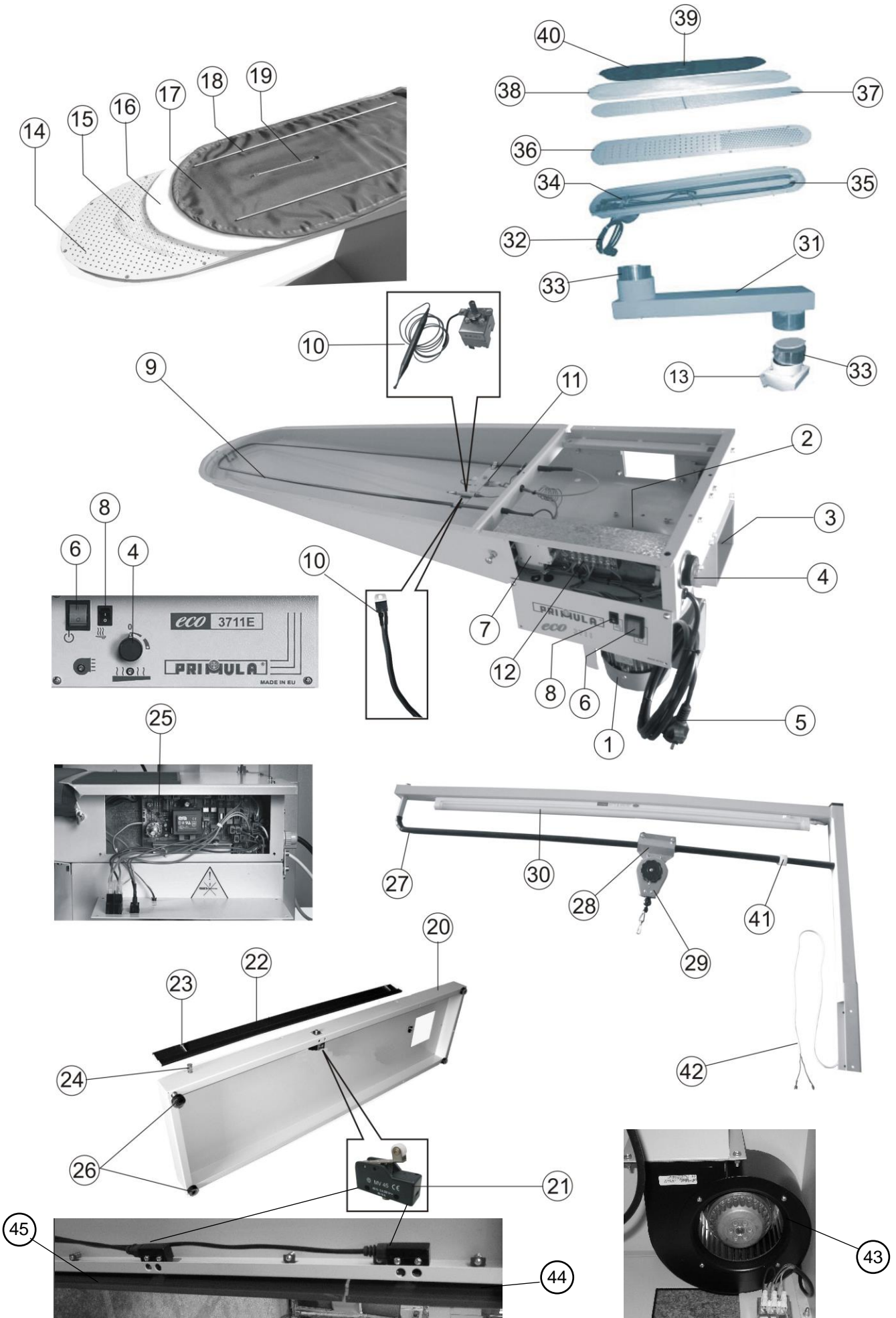
- Check if the ball bearings of the motor are faulty. Replace them.
- Check the impeller to be sure, that there is no dust which could cause the vibration.

8.5 The blowing of air does not function

(If you have purchased the Eco DOB S+B)

- Check if the blowing's bouton pedal **No 44** is damaged.
- Check the motor **No 45**.

Images of spare parts

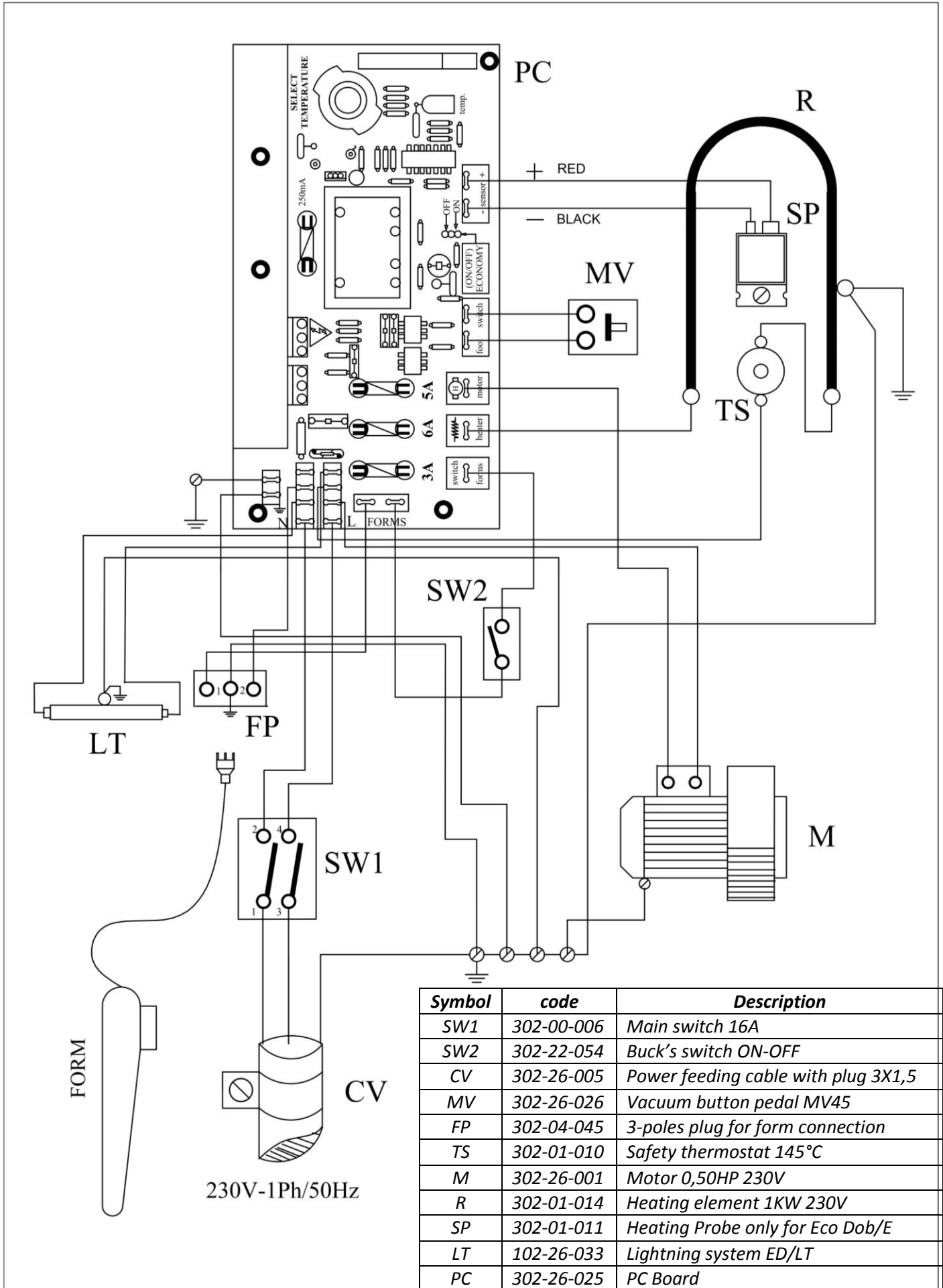


List of spare parts

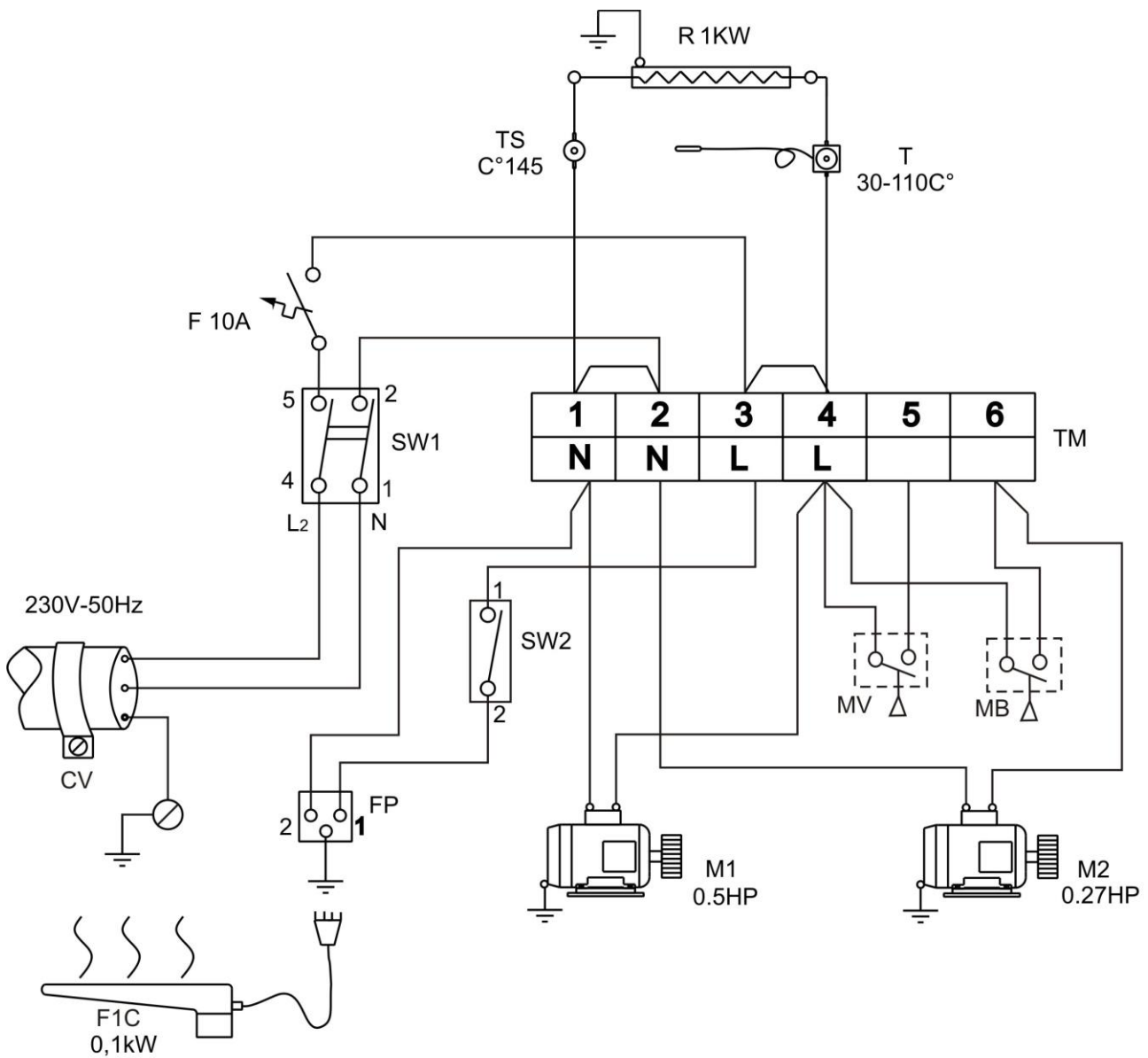
	Article nr.	Description
1	302-26-001	Motor 0,50HP 230V
2	302-26-002	Impeller Ø160
3	192-26-003	Metallic shell
4	302-26-004	Thermostat's knob
	306-11-045	Thermostat's knob only for Eco DOB E
5	302-26-005	Power feeding cable with plug 3X1,5
6	308-00-006	Switch ON-OFF 16A
7	302-26-007	FUSE 10A
8	302-22-054	Buck's switch ON-OFF
9	302-01-014	Heating element 1KW 230V
10	302-00-012	Thermostat 110°C
	302-01-011	Heating Probe only for Eco DOB E
11	302-01-010	Safety thermostat 145°C
12	302-26-012	Terminal block
13	192-27-013	Supporting corner Ø85
14	192-26-014	Perforated plate
15	302-26-015	Wire mesh
16	302-01-029	Foam blue IFP-7mm
	302-01-031	Felt molletone (optional)
	302-01-031-4	Vacufix silicone SPF-6mm (optional)
17	302-01-030	Fabric cover
18	302-01-032	Cover's rail
19	302-01-035	Spring with clips
20	192-26-020	Ironing table base
21	302-26-026	Vacuum button pedal MV45
22	192-26-022	Vacuum's foot pedal
23	302-26-023	Foot pedal's screw
24	302-26-024	Foot pedal's spring
25	302-26-025	PC Board only for Eco DOB E
26	302-02-014	Regulator Alignment adjusting leg
27	192-26-027	Balancer's – trolley movement bar
28	302-00-049	Trolley of balancer
29	302-00-051	Balancer
30	102-26-033	Lightning system ED/LT
31	102-26-031	Swivel arm ED/AM Ø85
32	304-01-032	Form's feeding cable
33	192-26-033	Brass gasket of ECO swivelarm
34	304-01-034	Safety thermostat 65°C
35	304-01-035	Heating element 100W 230V
36	304-01-036	Perforated plate
37	304-01-037	Wire mesh plastic
38	304-01-038	Felt molletone
	304-01-038-1	Foam blue IFP-7mm (optional)
	304-01-038-2	Vacufix silicone SPF-6mm (optional)
39	304-01-039	Spring
40	304-01-040	Fabric cover

41	302-26-041	<i>Stop for Balancer</i>
42	302-26-042	<i>Cable for lighting Eco DOB E</i>
43	302-26-043	<i>Blowing motor 0.27HP (only for Eco DOB S+B)</i>
44	192-26-051	<i>Blowing foot pedal (only for Eco DOB S+B)</i>
45	192-26-052	<i>Suction foot pedal (only for Eco DOB S+B)</i>

Wiring Diagram Eco DOB E



Wiring Diagram Eco DOB S+B



Symbol	Code	Description
SW1	308-00-006	Main switch 16A
SW2	302-22-054	Buck's switch ON-OFF
CV	302-26-005	Power feeding cable 3 X 1.5mm
MV	302-26-026	Vacuum pedal switch
MB	302-26-026	Blowing pedal switch
FP	302-27-004	3-poles plug for form connection
TM	302-26-006	Wires terminal block
TS	302-01-010	Safety thermostat 145°C
R	302-01-014	Heating element 1kW 230V
T	302-00-012	Thermostat 110°C
F	302-26-007	Main fuses 10A
M1	302-26-001	Vacuum motor 0.50HP/230V-1N-50Hz
M2	302-26-043	Blowing motor 0.27HP/230V- 1N-50Hz
F1C	304-01-035	Heating element 100W 230V

TECHNICAL ASSISTANCE

For any advice about the operation of the machine or the spare parts, please contact the dealer you have purchased the machine from or us directly at:



14th km Thessaloniki – Kilkis, 57200 Liti, Thessaloniki, Greece

Tel.: +30 23940 71 215 Fax: +30 23940 71 438

E-mail: info@primula.gr

All specifications have been made to the best of our knowledge.

Primula S.A preserves the right to make changes to the system and its parts without prior notice.